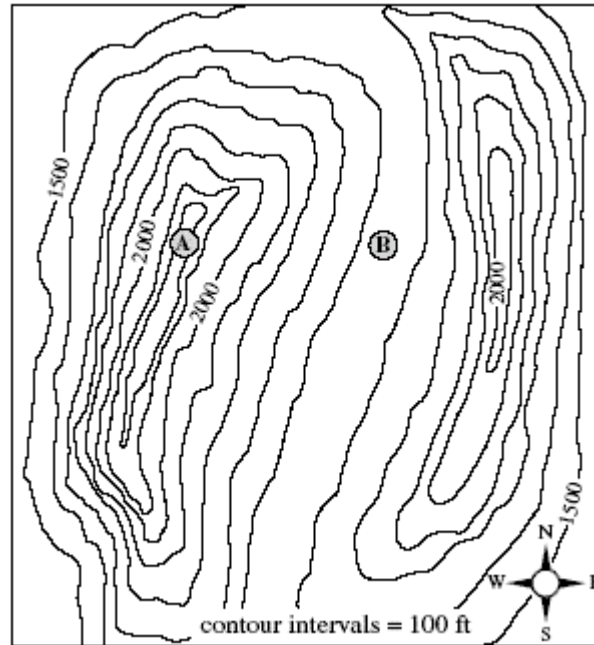


Name: \_\_\_\_\_ Section: \_\_\_\_\_  
Contour Maps – Open Response Question 1

The illustration below is a topographic map with two landforms labeled A and B.



- Identify the landform shown at point A. Describe how the contour lines and elevations are used to represent the features of this landform.
- Identify the landform shown at point B. Describe how the contour lines and elevations are used to represent the features of this landform.